

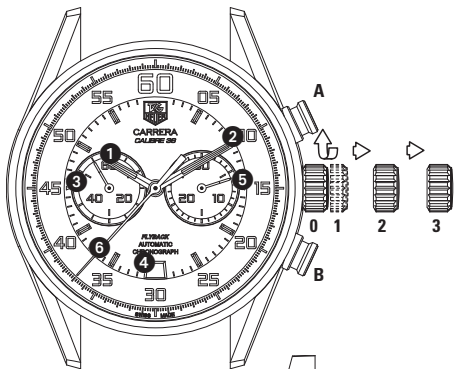


TAGHeuer

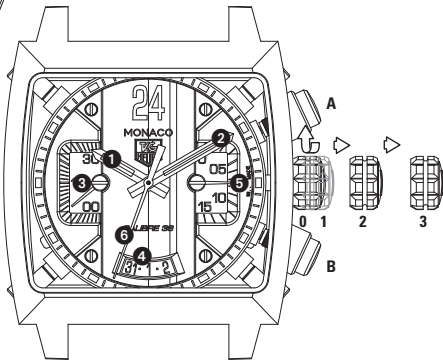
INSTRUCTIONS AND GUARANTEE CARD

CALIBRE 36





1



INTRODUCTION

Congratulations on your purchase of a TAG Heuer watch. You have made an excellent choice in selecting the ultimate in technical innovation, precision and endurance – high-performance sports criteria that have been hallmarks of TAG Heuer's commitment to its craft since 1860. With its long dedication to measuring time, this Swiss watchmaking firm has a number of technical patents to its name.

It is through this dedication that TAG Heuer has become the Official Timekeeper for a number of major sporting events and has achieved recognition as a world leader in the field of prestige sports watches.

Each TAG Heuer timepiece is built to meet the most exacting requirements. The materials used in our watches make them exceptionally resilient, even when used under the most rigorous conditions, and very careful attention is paid to detail. Before a new TAG Heuer product is launched it is put through more than 60 precision and quality tests.

With its modern, innovative design, your new TAG Heuer watch combines tradition with technical achievement. We hope it will bring you complete satisfaction.

LIMITED INTERNATIONAL GUARANTEE

Your TAG Heuer has been manufactured in the authentic tradition of Swiss watchmaking and has been individually tested to ensure that it is water-resistant and functions perfectly. Nevertheless, it is covered by a limited international guarantee against any manufacturing defect for a period of two years from the date of purchase, under the conditions below.

What is covered?

Under this limited two-year guarantee, TAG Heuer undertakes to repair, free of charge, any problem with the functions of the watch that result from defective manufacturing. This guarantee is only honored in official TAG Heuer Customer Service Centers that are present in more than 100 countries.

In addition, certain limiting conditions do apply and for this reason it is essential that you read the following paragraphs.

What are the limiting conditions of this guarantee?

To benefit from this limited guarantee the following conditions must be met:

- the international guarantee card, located in the guarantee booklet you received with your watch, must be enclosed with the watch when it is sent for repair and must be signed and dated at the time of purchase by an authorized TAG Heuer dealer; TAG Heuer will not honor the guarantee for watches sold without a valid guarantee card properly filled out and signed by an authorized TAG Heuer dealer or by a dedicated TAG Heuer boutique;
- the serial number engraved on the case is perfectly legible and no part of the original case back or original serial number has been removed, modified, falsified, altered, replaced, erased, defaced or made illegible.

Failure to abide by any of the above conditions renders all rights resulting from the TAG Heuer international guarantee null and void.

What is not covered?

Damage resulting from service provided anywhere other than at an official TAG Heuer Customer Service Center is not covered and shall void the guarantee. The limited guarantee also does not cover bracelets, crystals and batteries, or any damage to the case or movement due to moisture that might have entered the watch as a result of improper handling. More generally, it does not apply if there has been improper or inadequate use of the watch.

General conditions and limitations:

This limited guarantee replaces any guarantees implied by some countries' local law, including the implied guarantee of merchantability, which are disclaimed. Some countries' local law may not allow the exclusion or limitation of incidental or consequential damages, so the above limitation or exclusion may not apply to you. This guarantee gives you specific legal rights and you may also have other rights under local laws which vary from country to country. TAG Heuer and its official Customer Service Centers shall have sole discretion to decide to repair or replace any TAG Heuer timepiece under this limited international guarantee.

We recommend that you send your watch by registered mail, carefully wrapped to avoid damage, to the nearest official TAG Heuer Customer Service Center, or take it to your authorized TAG Heuer dealer or dedicated TAG Heuer boutique. TAG Heuer is not responsible for loss or damage during shipping. The list of official TAG Heuer Customer Service Centers can be found at the end of this booklet. On request, these official TAG Heuer Customer Service Centers will provide you with the details of your nearest authorized TAG Heuer dealer or dedicated TAG Heuer boutique. This guarantee does not affect your legal rights as a consumer. Please check that this booklet contains an international guarantee card – otherwise you will not be covered by the limited guarantee services outlined above.

In this booklet you will find a number of recommendations for the use and maintenance of your TAG Heuer watch. Please follow them carefully since the guarantee will become invalid in the event of inappropriate use or handling. In particular, you should ensure that, after setting the day, date and time, the crown is pushed into position 1*/ fully screwed into position 0* to ensure the water-resistance of the watch.

TAG Heuer will provide spare parts within a period of 10 years from the date of purchase.

**Depending on model*

Recommendations and limited guarantee specific to the Australian and New Zealand markets

TAG Heuer goods come with guarantees that cannot be excluded under the Australian Consumer Law: the customer is entitled to a replacement or refund for a major failure and for compensation for any other reasonably foreseeable loss or damage, and the customer is also entitled to have the goods repaired or replaced if the goods fail to be of acceptable quality and the failure does not amount to a major failure.

YOUR TAG HEUER

The movement

The TAG Heuer Calibre 36 has a balance that oscillates at the exceptionally high frequency of 36,000 vibrations per hour, which gives it very great precision. The chronograph functions are coordinated by a column wheel. TAG Heuer is one of the very few manufacturers to master this sophisticated technique, the true signature of a great chronograph.

Your chronograph is equipped with a self-winding automatic movement. Each action of your wrist activates the rotor which winds the spring and keeps your watch functioning. When it is completely wound, your watch has a power reserve of approximately 50 hours.

Technical specifications

Your new TAG Heuer chronograph combines all the technical features of an authentic sports watch:

- water-resistance to 100 meters
- luminescent hands and minute-circle markers
- steel bracelet, or rubber or leather strap, fitted with a folding clasp incorporating security push buttons*
- screw-in crown*
- scratch-resistant sapphire crystal with double anti-reflective coating (inside and outside)*
- scratch-resistant sapphire case back*.

** Depending on model*

CARING FOR YOUR TAG HEUER

Like any high quality watch your TAG Heuer requires a certain amount of care. These guidelines will enable you to ensure its reliability and protect its appearance over time.

Cleaning. Be sure to rinse your watch regularly with fresh water and soap, especially after it has been in salt water. If you plan to wear it in water frequently or for prolonged periods, we recommend choosing a metal bracelet: gold, steel or bi-metallic.

Condensation. If the temperature changes suddenly, a slight condensation may appear under the crystal of your watch. This will disappear by itself and will not affect the functioning of the watch. If the condensation persists, please see your official TAG Heuer dealer.

Pressure seals. Over time, the pressure seals on your watch may deteriorate. We recommend that you have the water-resistance of your watch checked once a year by your TAG Heuer dealer, who will replace the seals if necessary.

Automatic movement. When a self-winding mechanical watch has not been worn for some time, it uses up its power reserve and stops. To start it again, either place the crown in position 1 and rewind it manually, or activate the rotor by making movements of your wrist. The automatic movement requires particular care. To maintain its precision, TAG Heuer Service Centers recommend a service every 4 to 6 years. This period can vary according to the conditions in which your watch is used.

Crystal. The crystal in some of our watches is coated with a single or double anti-reflective treatment* to improve readability. Wear and tear may cause marks to appear. These are considered normal and are therefore not covered by the warranty. In normal conditions of use, the coating will be completely satisfactory.

Bracelets / straps. To take care of your metal bracelet, we recommend cleaning it with soap and water once a month.

Our straps are made of the finest leather and treated for superior resistance to humidity. Nevertheless, since leather is a noble material we suggest that you limit the time it spends in water. To take

care of your leather strap, we recommend cleaning it with a soft, dry cotton cloth and avoiding the use of abrasive products. It is normal for leather to become slightly darker with time.

Crocodile straps are delicate and you should take special care to prevent them getting wet. The leather comes exclusively from crocodile farms and its origin is certified by customs documentation. For your comfort, wash a rubber strap regularly with soap and water, particularly on the inner surface.

To avoid any risk of accidental opening, our bracelets are fitted with a folding clasp.

Gold plating. Some of our watches have design features highlighted by a fine, electro-plated gold coat. Over time, repeated contact with hard, rough surfaces can cause this thin layer to deteriorate. With normal use, the gold plating on your TAG Heuer will remain completely satisfactory.

Solid gold. Some of our watches are made of solid 18-carat gold.

Titanium Carbide coating. Some of our watches have features that have been sprayed with a fine coating of titanium carbide. Over time, repeated contact with hard, rough surfaces can cause this fine layer to deteriorate. These are considered normal and are therefore not covered by the warranty. With normal use, the coating of your TAG Heuer will remain fully satisfactory.

**Depending on model*

DISPLAY

Fig. 1

Watch hands

- ① Hours ② Minutes ③ Permanent Seconds*

* **Depending on model:** the TAG Heuer Calibre 36 may have a half-counter display with a double hand. In this case, the primary colour of the hand indicates the first 30 seconds of the minute and the secondary colour indicates the last 30 seconds, on the same counter.

- ④ Date

Chronograph hands

- ⑤ 30-minutes counter**

** **Depending on model:** the TAG Heuer Calibre 36 may have a half-counter display with a double hand. In this case, the primary colour of the hand indicates the first 15 chronograph minutes and the secondary colour indicates the last 15 chronograph minutes, on the same counter

- ⑥ 60 seconds counter

SETTING THE TIME AND DATE

Your TAG Heuer is fitted with a screw-in crown* and safety seals which guarantee it to be waterproof.

Fig. 1

Position 0: crown screwed in*

Important: The crown must be screwed in correctly to guarantee the water-resistance of the watch to 100 meters. Unscrew the crown to move to position 1.

Position 1: crown unscrewed,* manual winding position

This position allows you to wind your watch manually by rapidly turning the crown clockwise. Pull the crown out to position 2.

Position 2: changing the time

Turn the crown forwards or backwards according to the change you want to make. Then pull the crown out once more to position 3.

Position 3: rapid date change

Turn the crown clockwise to advance the date.

Do not forget: ALWAYS push the crown back to position 1 then screw it down in position 0*.

**Depending on model*

SIMPLE CHRONOGRAPH FUNCTION

Important: Before each timing, the chronograph hands must all be in their starting positions. If necessary, press push button B to return them to zero.

1. Start: push button A (START)
 2. Stop: push button A (STOP)
- > **Reading the measured time**
3. Reset to zero: push button B

ADDITIONAL CHRONOGRAPH FUNCTION

This function measures several consecutive times, adding them to give the total time measured.

Important: before each timing, the chronograph hands must be at zero. If necessary, reset them to zero by pressing button B.

1. Start 1st time: button A (START)

2. Stop 1st time: button A (STOP)

> ***Read 1st time***

3. Start 2nd time: button A (START)

4. Stop 2nd time: button A (STOP)

> ***Read 1st and 2nd times***

etc.

5. Reset to zero: button B

CHRONOGRAPH FLYBACK FUNCTION*

In this function, a single press on button B resets the chronograph to zero and immediately starts another timing. This three-stage operation – stop the chronograph, reset to zero, start the chronograph – is performed with no loss of time.

NOTE: before starting the first timing the chronograph hands must be at zero. If necessary, reset them to zero by pressing button B.

1. Start timing 1: button A (START)
 2. Flyback function button B (FLYBACK)
- > **Start timing 2 (reset to zero and start new timing)**
3. Flyback function button B (FLYBACK)
- > **Start timing 3 (reset to zero and start new timing)**
- etc.
4. Stop button A (STOP)
 5. Reset to zero button B

**Depending on model*

USING THE TACHYMETRE SCALE ON THE FIXED BEZEL*

The tachymetre enables you to measure your average speed over a distance of 1 km or 1 mile (for speeds in excess of 60 km/h or 60 mph).

Measure the time needed to cover 1 km or 1 mile. To start the timing, press push button A. When you stop the timing by pressing push button A again, the seconds hand indicates a number on the tachymetre scale. This is your average speed in km/h or mph.

**Depending on model*

TAG HEUER CHRONOMETER*

Only the chronographs that are certified chronometer are accompanied by the C.O.S.C. certificate. This confirms that the movement has successfully passed all the tests of the Swiss Official Chronometer Control and that its precision and reliability have been verified over a period of 15 days, in 5 different positions and at 3 different temperatures.

The personalized number on the certificate corresponds to the chronometer's movement number and guarantees that your chronograph has been certified by the C.O.S.C.

**Depending on model*